

Quiz \rightarrow M, 5/19

Intro. Electricity, Ohm's law,
Circuits

Formal Lab \rightarrow T, 5/20

Test \rightarrow W, 5/21

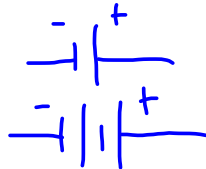
All on Quiz + Electromagnetism, Safety

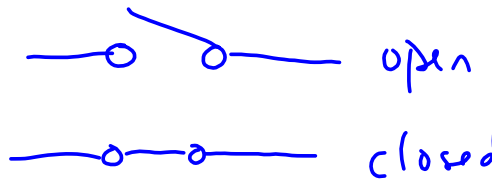
Circuits:

• Pathways:

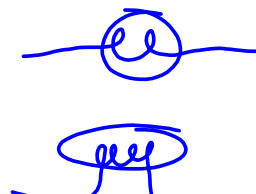
- Electrons must have a path to travel
- Closed circuit → complete path for electrons to move (voltage or current source, wires, output)
- Open circuit → no complete path for electrons to move
- We use switches to open and close circuits

• Circuit Diagrams:

- Electrical supply 
(DC source: Battery)

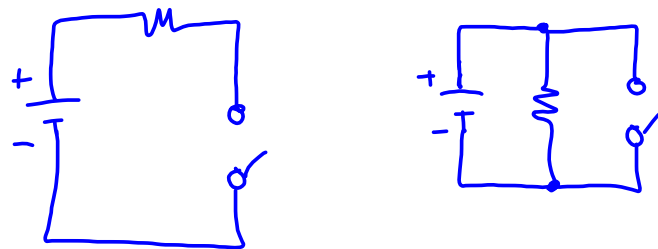
- Switch  open
closed

- Resistor 

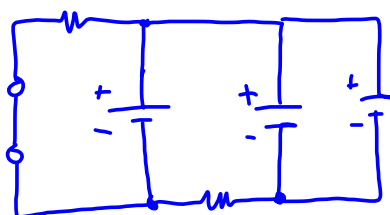
- Light Bulb 

- Some Piece 

- 1 Resistor, 1 battery, 1 switch



- 2 Resistors, 3 batteries, 1 switch

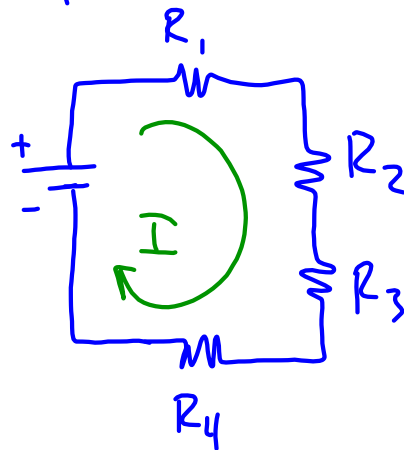


- Series Circuits:

- Only one path for current to travel

- Current is the same in all parts of the circuit

- Example:



- If we remove one part from the circuit, current flow stops

- Total resistance: Add up all the resistors ($R_1 + R_2 + R_3 + R_4$ in above example)